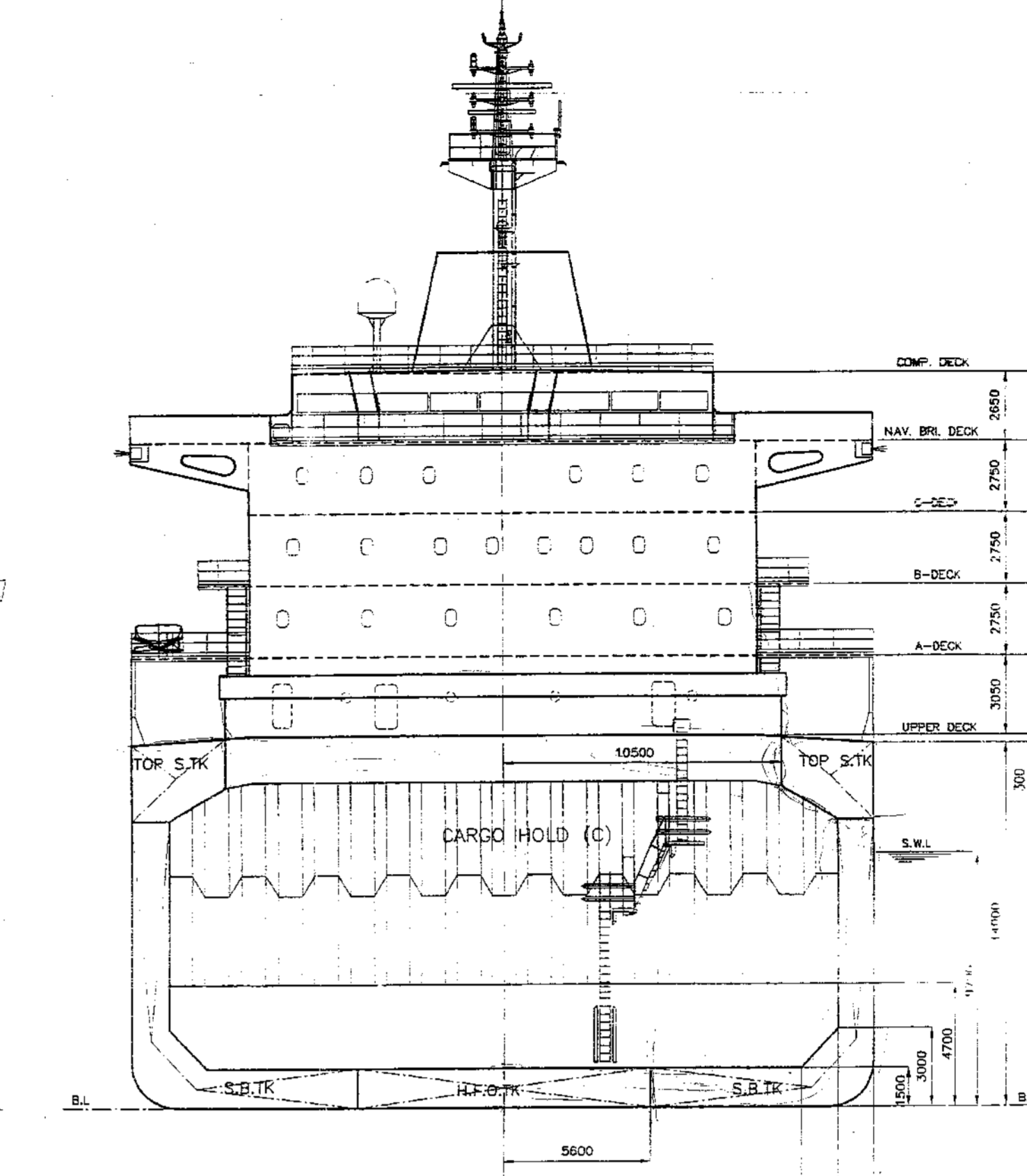
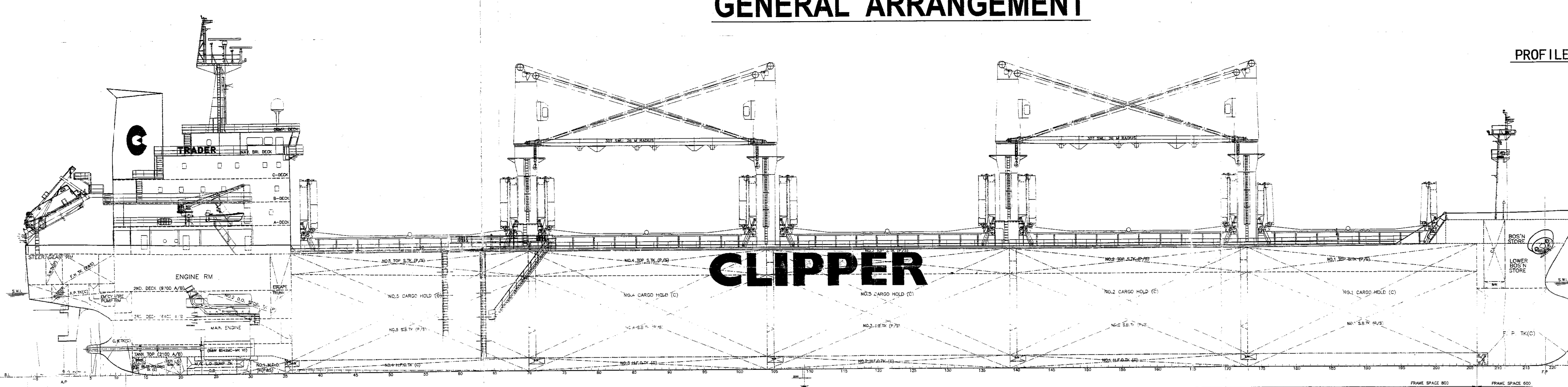


# GENERAL ARRANGEMENT

## CLIPPER

PROFILE



A - DECK

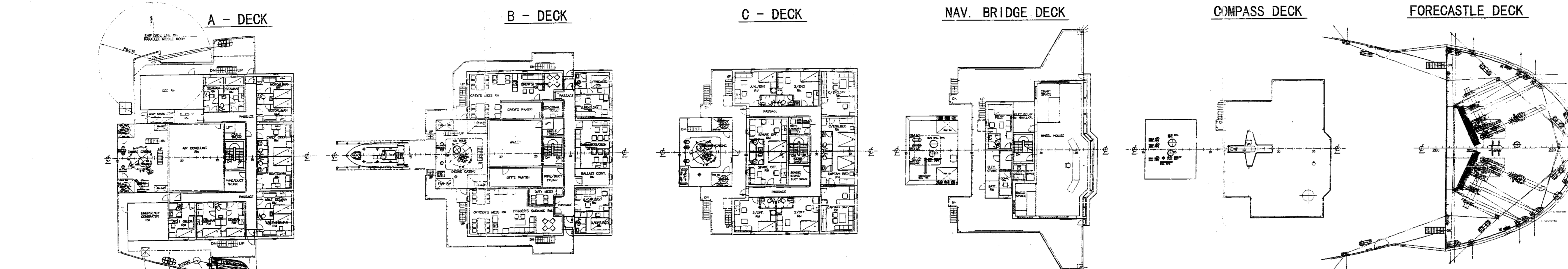
B - DECK

C - DECK

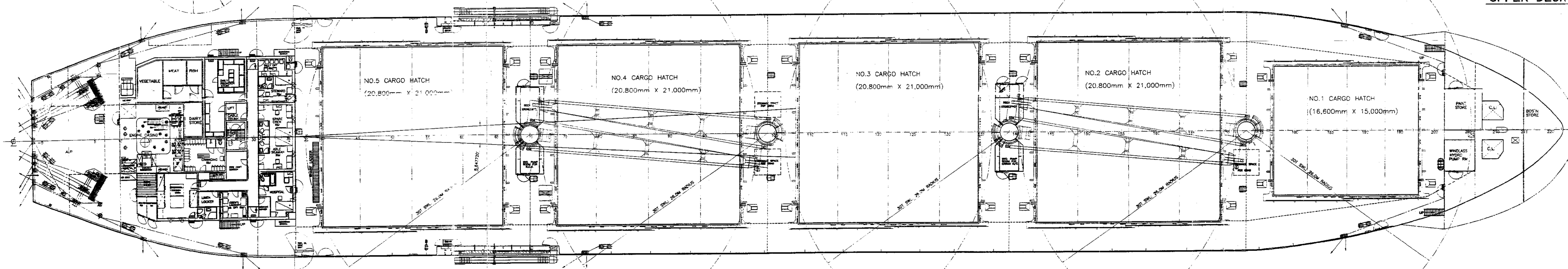
NAV. BRIDGE DECK

COMPASS DECK

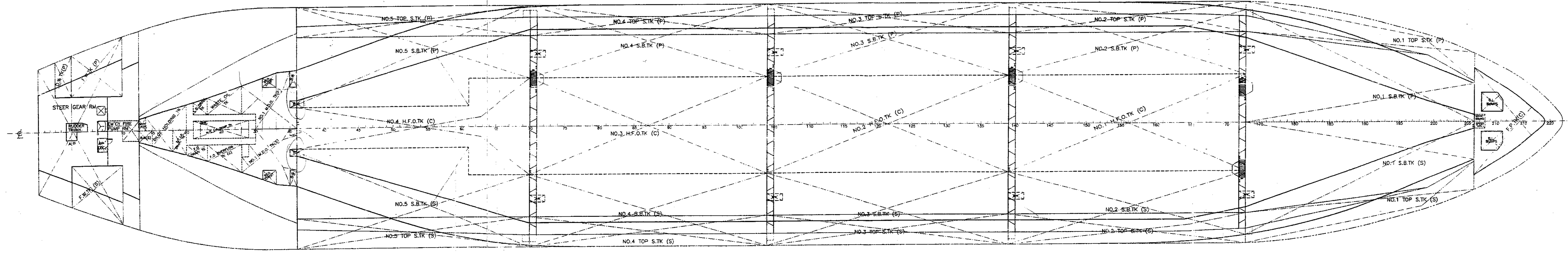
FORECASTLE DECK



UPPER DECK



TANK TOP



REV. MARK		APPROVAL		DATE		CHKR	
NO.	(A-Z)	BY	OWNER CLASS	DSGR	BSGR	DATE	CHKR
01	Δ	ORIGINALLY PREPARED FOR APPROVAL					
	1)	CLEARED OF CLASSIFICATION	CLASS				
	2)	CLEARED ACCOMMODATION'S WINDOWS LOCATION					
	3)	DECK CRANE HEIGHT CHANGED (12.20M → 11.60M)	YARD				
	4)	CLEARED FORECASTLE DECK PLAN AND FORWARD MOORING SYSTEM AND ANCHORING SYSTEM					
	5)	MODIFIED THE PAINT STORE AND MIDLAND HYDRO PUMP ROOM SIZE AND STEEL DOORS	OWNER				
	6)	MODIFIED COMMON TOILET AND ADDED DUCT SPACE					
	7)	SEPARATED OFFICE'S LAUNDRY ROOM AND CABLE TRUNK					
	8)	REARRANGED OFFICE'S LAUNDRY ROOM AND CABLE TRUNK AND CHANGED BONDED STORE/DUST SPACE ROOM NAME					
	9)	ADDED LIFEBOAT ACCESS PLATE ON C-DECK PLAN	YARD				
	10)	DELETED FRESH AIR INTAKE AT B-DECK					
	11)	MOVED DOORS ON A-DECK PLAN					
	12)	INCREASED CO2 ROOM ON A-DECK PLAN					
	13)	EXTENDED DECK STORE (AFT & FWD) AND HYD. PUMP ROOM FOR CARBO H/C AND HYD. PUMP ROOM FOR R.C.V.	OWNER				
	14)	ADDED VENTILATION FAN ROOM IN DECK STORE FWD					
	15)	REARRANGED TALLY OFFICE ROOM AND COMMON LAVATORY ON UPPER-DECK PLAN					
	16)	CLEARED AFT VENTILATION SYSTEM					
	17)	CLEARED DOUBLE BOTTOM FLOOR SECTION PLAN, WEL PLATE 2401 OFF TO 1600 OFF 24.01 PLAN	ARC				
	18)	ENGINE ROOM TALL ENDS, BELOW EXISTING					
	19)	CLEARED CARBO. MATRY COVER AT A-DECK					
	20)	MOVED ACCESS LADDER OF FORECASTLE DECK					
02	Δ	1) MODIFIED OF DECK CRANE	YARD				
		2) MODIFIED OF LIFEBOAT DAVIT AND HEIGHT					
		3) MODIFIED OF PROVISION CRANE LOCATION AND LENGTH					

### PRINCIPAL PARTICULARS

LENGTH	178.70 m
LENGTH B.P.	170.00 m
BREADTH	28.00 m
DEPTH	14.00 m
DRAFT DESIGN (M.L.D.)	9.50 m
DRAFT SCANTLING (M.L.D.)	9.70 m
DEADWEIGHT	
- AT DESIGN DRAFT	29,300 T
- AT SCANTLING DRAFT	30,000 T
MAX. ENGINE	B&W 6S42VC-MV VII
- M.C.F.	6,480 KW x 136.0 RPM
- S.M.C.R.	5,232 KW x 130.8 RPM
- C.S.R.	5,287 KW x 127.8 RPM
SPEED ON DESIGN DRAFT AT C.S.R.	14.3% KNOTS
SERVICE SPEED WITH 15% SEA MARGIN	14.3% KNOTS
CLASSIFICATION	ABS
*A1(E) Bulk Carrier B1-A + AUG + ADD. SH. SHIP WITH description of "ESP" and "Strengthened for carriage of heavy certain holds may be empty." UWL/D	
TOTAL COMPLEMENT	25+6(SUEZ CREW)

DESIGN: **MARINE HEAVY INDUSTRIES CO. LTD.** HULL NO. CSLO14-021  
 OWNER: **CLIPPER** SHIP NAME  
 SUBJECT: **TRADER SERIES 30,000 DWT BULK CARRIER**  
**GENERAL ARRANGEMENT**  
 APP. BY: **B. Y. HA**  
 CHK. BY: **B. J. JOUNG**  
 DWG. NO.: **A-2** SCALE: 1/200 DATE: 04.01.19. CLASS: ABS DWG. NO.: B102-00  
**COCHIN SHIPYARD LTD.**  
 MASTER HEAVY INDUSTRIES CO., LTD.